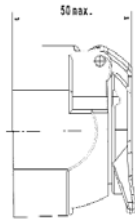
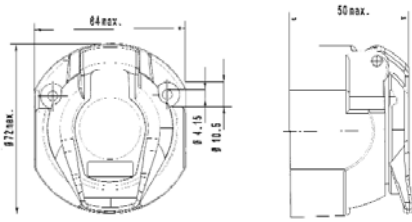


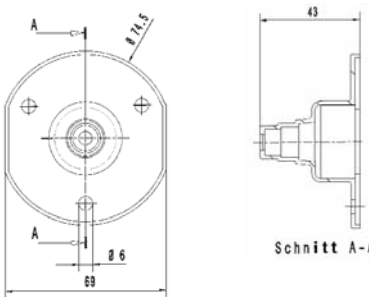


## Connectors | 13-pin

### 12 V | ISO 11446



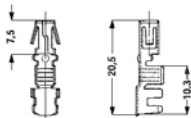
Grommet



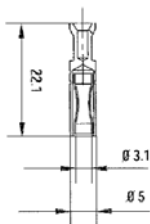
Screw Contacts



Crimp contact



Soldering



Art.-No.	Description
----------	-------------

**13-pin socket ISO 11446**

- Impact resistant plastic
- Load capacity: 20 A at 12 V
- Seal in cover
- Material: Plastic PA6 MD30
- Incl. grommet
- Available with crimping tools

**with screw contacts**

- Miralloy surface coating
- without microswitch for rear fog light
- 780 200 000
- with microswitch for rear fog light
- 780 301 000
- with microswitch for rear fog light, right exit
- 780 301 400

**with crimp contacts (stamped contacts)**

- without microswitch for rear fog light
- 780 200 100
- with microswitch for rear fog light
- 780 301 300

**with soldering contacts (massive contacts)**

- without microswitch for rear fog light
- 780 200 500
- with microswitch for rear fog light
- 780 301 500

780 202 000 **Park socket ISO 11446**

... .. 1 **Individual packaging**

**Accessories**

**Crimp contact for socket ISO 11446**

**RAM-Contact sleeves**

- 780 301 930 0,5 - 1,0 mm<sup>2</sup> (Reel of 3.000 pcs)
- 780 301 920 1,0 - 2,5 mm<sup>2</sup> (Reel of 3.000 pcs)
- 780 301 940 2,5 - 6,0 mm<sup>2</sup> (Reel of 3.000 pcs)

**Solder contact (also crimpable) for socket ISO 11446**

- 780 210 650 0,5 mm<sup>2</sup>
- 780 210 660 1,0 mm<sup>2</sup>
- 780 210 670 1,5 mm<sup>2</sup>
- 780 210 680 2,5 mm<sup>2</sup>